

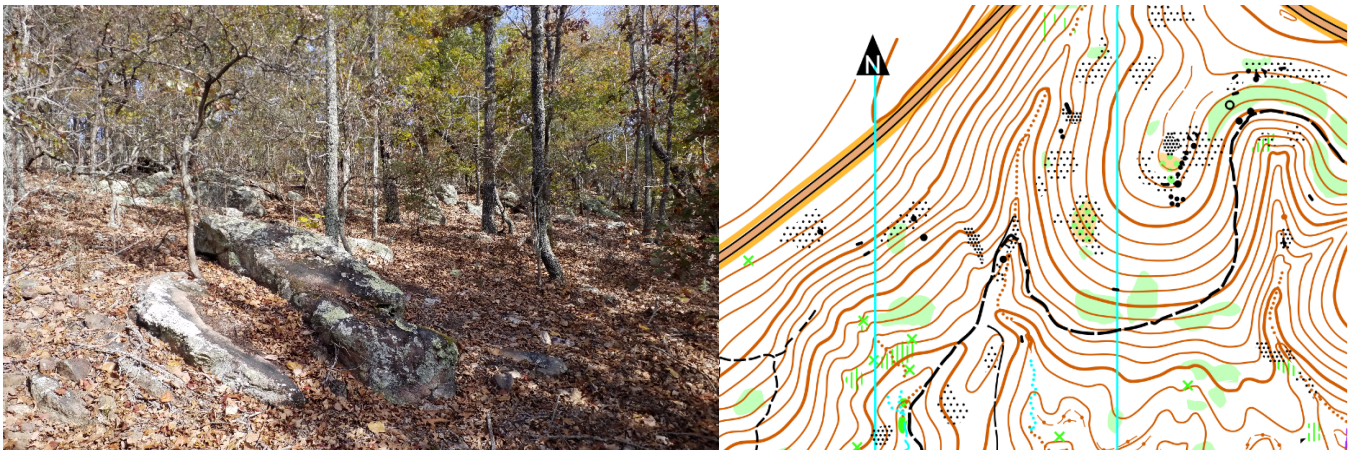
Pine Mountain Mapper's Notes:

Pine Mountain is a NE-SW ridge of hard quartzite, intruded into the Piedmont terranes. Erosion has exposed the ridge and sediment has created the typical spurs and reentrants extending to the south and north of the ridge leaving behind rocky slopes of sharp rock that runners should treat with caution.

Below is a southerly view of Lake Franklin and the GNC Event center from the top.



The upper, steep slopes of the mountain have a canopy of hardwoods, leaving a thick layer of fallen leaves hiding the rocky areas underneath and making for treacherous footing. Areas where the soil is too thin to support large trees are classified as rough open with scattered thickets (slow running).



Farther down the slope, pines and oaks dominate the overstory and many have fallen due to tornados passing through the area a decade ago. Not all fallen trees stop fast progress in the forest but those that might are marked with narrowly spaced vertical lines. Rootstocks, the up turned root ball of a fallen tree, are numerous as well and only those exceeding one meter in height warrant a green "X" symbol.



Terraces or “ruined earth walls” symbols indicate a distinct change in the contour of the land and are prevalent on the lower slopes of Pine Mountain. Some, as above, have exposed rock and where obvious, are marked with a black ruined rock wall symbol. Terraces make good navigation features as there may be several between contours.

Again, caution should be taken when running on this rocky leaf covered ground.

The maps complete legend.

	<p>contour formline, index steep bank, small earth wall (terrace) gully, dry ditch deep gully dirt pile, depression pit, broken ground</p>		<p>steep cliff, impassable passable rock outcrop rocky pit, culvert boulders, small to large boulder cluster, rock pile stoney ground, bare rock rock wall, small rock dam fence, uncrossable, ruined ruin, tower, boundary marker junk pile, man-made feature trench powerline bridge, small, foot bridge sandy ground building, closed canopy/ shelter</p>		<p>water with bank line, uncrossable shallow water with bank line water hole crossable water course, small, seasonal marsh with border line, uncrossable marsh, small linear marsh indistinct marsh, small well/water tank, spring, prominent water feature</p>		<p>open land with trees, bushes rough open land with trees/ thickets vegetation, slow running low vegetation, slow running, good visibility vegetation, walk low vegetation, good visibility vegetation, fight impassable vegetation, minimum width cultivated land, orchard distinct vegetation boundary large tree, distinct bush or tree, large vegetation feature</p>
	<p>paved road, large - small gravel road, jeep trail foot trail, large - indistinct old road bed, open - slow</p>		<p>large tree, distinct bush or tree, large vegetation feature</p>				